



# OUR MENU FOR CATS



CANS



POUCHES



SAUSAGES



[vafo.com](http://vafo.com)



# CARNILOVE

## Wild-Origin Pouches for Cats

• GRAIN-FREE • SUGAR-FREE •

INTO THE WILD...  
WITH THE CARNIVORES  
TO TRACK DOWN PREY....



THE HUNT IS ON!

CARNILOVE.COM





**85% WILD-ORIGIN  
MEATS  
IN FILLETS**

**GRAIN  
POTATO  
GMO  
SOY** *Free!*

*No!* **PRESERVATIVES  
& COLORANTS**



#### **CARNILOVE - rich in Wild Boar enriched with Chamomile**

**Composition:** 85% meat in fillets (71% chicken, 14% wild boar), 12% broth, 1% chamomile, 1% linseed oil, 0.5% minerals, 0.5% vegetable starch.

**Analytical constituents:** crude protein 8.0%, crude fat 4.2%, crude fibres 0.5%, crude ash 2.5%, moisture 82.0%, calcium 0.15%, phosphorus 0.2% sodium 0.3%, omega 3 0.2%

**CARNILOVE**  
rich in Turkey  
enriched with  
Valerian

**CARNILOVE**  
rich in Quail  
enriched with  
Dandelion

**CARNILOVE**  
rich in Duck  
enriched with  
Catnip

**CARNILOVE**  
rich in Pheasant  
enriched with  
Raspberry Leaves

**CARNILOVE**  
rich in Trout  
enriched with  
Echinacea

**CARNILOVE**  
rich in Rabbit  
enriched with  
Marigold



**Composition:**  
85% meat in fillets (71% chicken, 14% turkey), 12% broth, 1% valerian root, 1% linseed oil, 0.5% minerals, 0.5% vegetable starch

**Analytical constituents:**  
crude protein 9.0%  
crude fat 4.0%  
crude fibres 0.5%  
crude ash 2.5%  
moisture 82.0%  
calcium 0.15%  
phosphorus 0.2%  
sodium 0.3%  
omega-3 0.2%

**Composition:**  
85% meat in fillets (71% chicken, 14% quail), 12% broth, 1% dandelion, 1% linseed oil, 0.5% minerals, 0.5% vegetable starch

**Analytical constituents:**  
crude protein 8.5%  
crude fat 4.0%  
crude fibres 0.8%  
crude ash 2.2%  
moisture 82.0%  
calcium 0.2%  
phosphorus 0.2%  
sodium 0.4%  
magnesium 0.02%  
omega 3 0.2%

**Composition:**  
85% meat in fillets (71% chicken, 14% duck), 12% broth, 1% catnip, 1% linseed oil, 0.5% minerals, 0.5% vegetable starch

**Analytical constituents:**  
crude protein 8.5%  
crude fat 4.5%  
crude fibres 0.5%  
crude ash 2.2%  
moisture 82.0%  
calcium 0.2%  
phosphorus 0.2%  
sodium 0.3%  
omega 3 0.2%

**Composition:**  
85% meat in fillets (71% chicken, 14% pheasant), 12% broth, 1% raspberry leaves, 1% linseed oil, 0.5% minerals, 0.5% vegetable starch

**Analytical constituents:**  
crude protein 8.0%  
crude fat 4.8%  
crude fibres 0.5%  
crude ash 2.1%  
moisture 82.0%  
calcium 0.15%  
phosphorus 0.2%  
sodium 0.3%  
omega 3 0.2%

**Composition:**  
85% meat in fillets (71% chicken, 14% trout), 12% broth, 1% echinacea, 1% linseed oil, 0.5% minerals, 0.5% vegetable starch

**Analytical constituents:**  
crude protein 7.5%  
crude fat 4.0%  
crude fibres 0.5%  
crude ash 2.0%  
moisture 82.0%  
calcium 0.15%  
phosphorus 0.2%  
sodium 0.3%  
omega 3 0.25%

**Composition:**  
85% meat in fillets (71% chicken, 14% rabbit), 12% broth, 1% marigold, 1% linseed oil, 0.5% minerals, 0.5% vegetable starch

**Analytical constituents:**  
crude protein 9.5%  
crude fat 4.5%  
crude fibres 0.5%  
crude ash 2.5%  
moisture 82.0%  
calcium 0.15%  
phosphorus 0.2%  
sodium 0.3%  
omega-3 0.2%

NET WEIGHT: 85g, 1 Pallet: 4032 pcs., 1 box = 24 pcs.

NET WEIGHT: 12x85g, 1 Pallet: 280 pcs., 1 box = 1 pc.



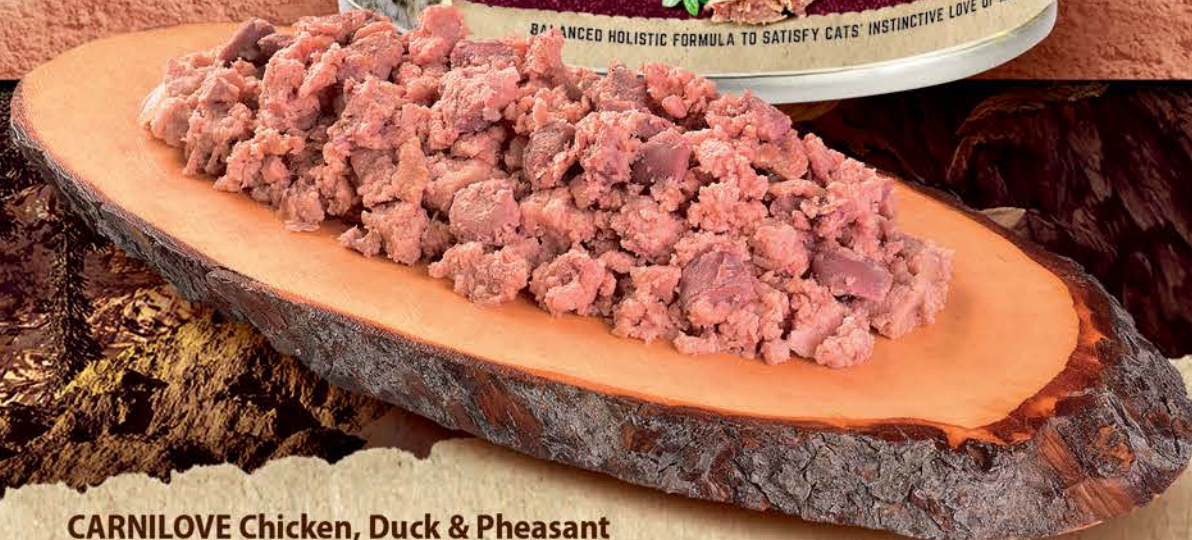


# WHITE MUSCLE MEAT

**GRAIN-FREE • POTATO-FREE**  
**WILD-ORIGIN MEATS**  
**Forest Fruit**







### CARNILOVE Chicken, Duck & Pheasant

**Composition:** 35% chicken meat, chicken liver, chicken hearts, broth, 10% duck, 10% pheasant, 1% cranberries, 1% minerals, 0.1% linseed oil

**Analytical constituents:** crude protein 10.6%, crude fat 6.6%, crude ash 2.4%, crude fibres 0.4%, moisture 79%, calcium 0.2%, phosphorus 0.3%, sodium 0.2%

#### CARNILOVE Chicken & Lamb for adult cats



**Composition:**  
35% chicken meat, chicken liver, chicken hearts, broth, 20% lamb, 1% cranberries, 1% minerals, 0.1% linseed oil

**Analytical constituents:**  
crude protein 10.8%, crude fat 6.8%, crude ash 2.3%, crude fibres 0.4%, moisture 79%, calcium 0.2%, phosphorus 0.3%, sodium 0.2%

#### CARNILOVE Turkey & Reindeer for adult cats



**Composition:**  
35% turkey meat, turkey liver, turkey hearts, broth, 20% reindeer, 1% cranberries, 1% minerals, 0.1% salmon oil

**Analytical constituents:**  
crude protein 10.7%, crude fat 6.9%, crude ash 2.5%, crude fibres 0.4%, moisture 79%, calcium 0.2%, phosphorus 0.3%, sodium 0.2%

#### CARNILOVE Turkey & Salmon for kittens



**Composition:**  
35% turkey meat, turkey liver, turkey hearts, broth, 20% salmon, 1% cranberries, 1% minerals, 0.2% salmon oil

**Analytical constituents:**  
crude protein 11%, crude fat 6.6%, crude ash 2.1%, crude fibres 0.4%, moisture 79%, calcium 0.3%, phosphorus 0.3%, sodium 0.3%, phosphorus 0.11%

#### CARNILOVE Turkey & Salmon for adult cats

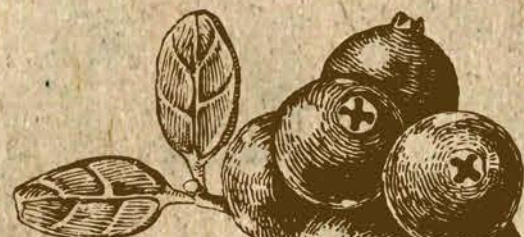


**Composition:**  
35% turkey meat, turkey liver, turkey hearts, broth, 20% salmon, 1% cranberries, 1% minerals, 0.1% salmon oil

**Analytical constituents:**  
crude protein 10.6%, crude fat 6.5%, crude ash 2.3%, crude fibres 0.4%, moisture 79%, calcium 0.2%, phosphorus 0.3%, sodium 0.3%

NET WEIGHT: 100g, 1 Pallet: 3900 pcs., 1 box = 12 pcs.

# CARNILOVE.COM







# Brit

## GRAIN FREE VETERINARY DIET



[BRITVETDIETS.COM](http://BRITVETDIETS.COM)

RENAL

STRUVITE

OBESITY





### Brit GF Veterinary Diet Cat Cans Renal

**Composition:** tuna (30%), salmon (26%), green peas (3%), pea flour, salmon oil (2%), lignocellulose, potassium citrate (0.6%), dried algae (0.5%, *Ascophyllum nodosum*), dried algae (0.4%, *Schizochytrium limacinum*), chitosan (0.05%), mannan-oligosaccharides (0.013%), fructo-oligosaccharides (0.01%), Mojave yucca (0.01%),  $\beta$ -glucans (0.01%), dried sea buckthorn (0.008%)

**Analytical constituents:** crude protein 7.0%, crude fat 9.0%, crude ash 2.0%, moisture 78.0% crude fiber 1.0%, calcium 0.2%, phosphorus 0.25%, sodium 0.6%, magnesium 0.02%, potassium 0.3%, arginine 0.15%, taurine 0.11%, omega 3 fatty acids 0.3%, omega 6 fatty acids 0.2%

### Brit GF Veterinary Diet Cat Cans Diabetes



#### Composition:

lamb (55%), green peas (3.5%), salmon oil (2%), pea flour, lignocellulose (1%), psyllium husks and seeds (0.5%), dried algae (0.5%, *Ascophyllum nodosum*), glucosamine (0.015%), chondroitin sulphate (0.01%), mannan-oligosaccharides (0.01%),  $\beta$ -glucans (0.008%), dried sea buckthorn (0.006%), fructo-oligosaccharides (0.005%), Mojave yucca (0.005%)

**Analytical constituents:** crude protein 9.0%, crude fat 8.0%, crude ash 2.0%, moisture 78.0%, total sugars (as NFE) 1.5%, crude fiber 2.0%, calcium 0.2%, phosphorus 0.25%, sodium 0.5%, starch 2%, total sugars 0.5%, magnesium 0.02%, omega 3 fatty acids 0.1%, omega 6 fatty acids 0.2%

### Brit GF Veterinary Diet Cat Cans Obesity



#### Composition:

lamb (55%), green peas (3%), salmon oil (2%), pea flour, lignocellulose (2%), psyllium husks and seeds (0.5%), dried algae (0.5%, *Ascophyllum nodosum*), glucosamine (0.015%), chondroitin sulphate (0.01%), mannan-oligosaccharides (0.01%),  $\beta$ -glucans (0.008%), dried sea buckthorn (0.006%), fructo-oligosaccharides (0.005%), Mojave yucca (0.005%)

**Analytical constituents:** crude protein 9.0%, crude fat 7.0%, crude ash 2.0%, moisture 78.0%, crude fiber 3.0%, calcium 0.2%, phosphorus 0.25%, sodium 0.5%, magnesium 0.02%, omega 3 fatty acids 0.1%, omega 6 fatty acids 0.2%

### Brit GF Veterinary Diet Cat Cans Gastrointestinal



#### Composition:

salmon (55%), green peas (3%), brewer's yeast (2%), pea flour, salmon oil (2%), lignocellulose, montmorillonite (0.5%), dried algae (0.5%, *Ascophyllum nodosum*), mannan-oligosaccharides (0.012%),  $\beta$ -glucans (0.01%), fructo-oligosaccharides (0.008%), Mojave yucca (0.008%), dried sea buckthorn (0.006%)

**Analytical constituents:** crude protein 9.0%, crude fat 7.0%, crude ash 2.5%, moisture 78.0%, crude fiber 1.0%, calcium 0.2%, phosphorus 0.25%, sodium 0.6%, magnesium 0.03%, potassium 0.3%, omega 3 fatty acids 0.2%, omega 6 fatty acids 0.2%

### Brit GF Veterinary Diet Cat Cans Hypoallergenic



#### Composition:

salmon (60%), green peas (3%), salmon oil (3%), pea flour, lignocellulose, dried algae (0.5%, *Schizochytrium limacinum*), dried algae (0.5%, *Ascophyllum nodosum*), mannan-oligosaccharides (0.01%),  $\beta$ -glucans (0.006%), fructo-oligosaccharides (0.005%), Mojave yucca (0.005%), dried sea buckthorn (0.005%)

**Analytical constituents:** crude protein 9.0%, crude fat 7.0%, crude ash 2.5%, moisture 78.0%, crude fiber 1.0%, calcium 0.2%, phosphorus 0.25%, sodium 0.6%, EPA (20:5 n-3) 0.01%, DHA (22:6 n-3) 0.15%, magnesium 0.03%, omega 3 fatty acids 0.3%, omega 6 fatty acids 0.2%

### Brit GF Veterinary Diet Cat Cans Struvite



#### Composition:

turkey (55%), green peas (3%), pea flour, salmon oil (2%), lignocellulose, dried algae (0.5%, *Ascophyllum nodosum*), sodium chloride (0.5%), calcium sulphate (0.35%), dried cranberries leaves (0.2%), *Vaccinium vitis-idaea*, mannan-oligosaccharides (0.01%), fructo-oligosaccharides (0.01%), Mojave yucca (0.008%),  $\beta$ -glucans (0.008%), dried sea buckthorn (0.006%)

**Analytical constituents:** crude protein 9.0%, crude fat 8.0%, crude ash 2.0%, moisture 78.0%, crude fiber 1.0%, calcium 0.2%, phosphorus 0.2%, sodium 0.8%, magnesium 0.04%, potassium 0.3%, chlorides 0.35%, sulphur 0.1%, hydroxyproline 0.1%, vitamin D3 200 IU/kg, omega 3 fatty acids 0.2%, omega 6 fatty acids 0.3%

NET WEIGHT: 200g, 1 Pallet: 2250 pcs., 1 box = 6 pcs.

GASTROINTESTINAL

HYPOALLERGENIC

DIABETES





# Brit care

PREVENTION BY NUTRITION

## FILLETS IN GRAVY

*85% meat in fillets  
for incredible flavour*

*4% herbs & berries  
for urinary health*



• Variety of diets / • Extra moisture / • Good digestibility / • Taste appeal





**NO**  
GMO  
SOY  
SUGAR



**Brit Care Cat Pouch  
TENDER TURKEY & SAVORY SALMON Fillets in Gravy  
Enriched with Sea Buckthorn and Nasturtium.**

**Composition:** fillets with 85% meat (62% chicken, 15% liver, 4% turkey, 4% salmon), broth, 1% sea buckthorn, 0,5% nasturtium, minerals, pea starch.

**Analytical constituents:** crude protein 8.0%, crude fat 4.0%, crude fibers 0,5%, crude ash 2.0%, moisture 82.0%, calcium 0.25%, phosphorus 0.2%, sodium 0.3%

**Brit Care Cat Pouch  
KITTEN. Fillets in  
Gravy with Tender  
Turkey Enriched with  
Sea Buckthorn and  
Nasturtium**



**Composition:**  
fillets with 85% meat (62% chicken, 15% liver, 8% turkey), broth, 1% sea buckthorn, 0,5% nasturtium, minerals, pea starch

**Analytical constituents:**  
crude protein 9.5%, crude fat 4.5%, crude fibers 0,5%, crude ash 2.0%, moisture 82.0%, calcium 0.25%, phosphorus 0.2%, sodium 0.3%

**Brit Care Cat Pouch  
STERILIZED. Fillets in  
Gravy with Healthy  
Rabbit Enriched with  
Sea Buckthorn and  
Nasturtium**



**Composition:** fillets with 85% meat (62% chicken, 15% liver, 8% rabbit), broth, 1 % sea buckthorn, 0,5 % nasturtium, minerals, pea starch

**Analytical constituents:**  
crude protein 9.0%, crude fat 3.0%, crude fibers 0,5%, crude ash 2.0%, moisture 82.0%, calcium 0.25%, phosphorus 0.2%, sodium 0.3%

**Brit Care Cat Pouch  
CHOICE CHICKEN.  
Fillets in Gravy  
Enriched with Sea  
Buckthorn and  
Nasturtium**



**Composition:**  
fillets with 85% meat (70% chicken, 15% liver), broth, 1% sea buckthorn, 0.5% nasturtium, minerals, pea starch

**Analytical constituents:**  
crude protein 8.5%, crude fat 4.0%, crude fibers 0.5%, crude ash 2.0%, moisture 82.0%, calcium 0.25%, phosphorus 0.2%, sodium 0.3%

**Brit Care Cat Pouch  
HEARTY DUCK. Fillets  
in Gravy Enriched with  
Sea Buckthorn and  
Nasturtium**



**Composition:**  
fillets with 85% meat (62% chicken, 15% liver, 8% duck), broth, 1% sea buckthorn, 0,5% nasturtium, minerals, pea starch

**Analytical constituents:**  
crude protein 8.5%, crude fat 4.5%, crude fibers 0,5%, crude ash 2.0%, moisture 82.0%, calcium 0.25%, phosphorus 0.2%, sodium 0.3%

**Brit Care Cat Pouch  
SAVORY SALMON.  
Fillets in Gravy  
Enriched with Sea  
Buckthorn and  
Nasturtium**



**Composition:**  
fillets with 85% meat (62% chicken, 15% liver, 8% salmon), broth, 1% sea buckthorn, 0,5% nasturtium, minerals, pea starch

**Analytical constituents:**  
crude protein 8.0%, crude fat 4.0%, crude fibers 0,5%, crude ash 2.0%, moisture 82.0%, calcium 0.25%, phosphorus 0.2%, sodium 0.3%

**brit-petfood.com**

1x pouch: NET WEIGHT: 85g, 1 Pallet: 4032 pcs., 1 box = 24 pcs.  
Multipack: NET WEIGHT: 12x85g, 1 Pallet: 308 pcs., 1 box = 1 pc.





# Brit care

PREVENTION BY NUTRITION

## FILLETS IN JELLY

*85% meat in fillets  
for incredible taste*

*4% veggies & herbs  
for healthy digestion*



• Variety of diets / • Extra moisture / • Good digestibility / • Taste appeal





**NO**  
GMO  
SOY  
SUGAR



**Brit Care Cat Pouch STERILISED  
Fillets in Jelly with Hearty Duck & Tender Turkey  
enriched with Carrot & Rosemary**

**Composition:** fillets with 85% meat (62% chicken, 15% liver, 4% duck, 4% turkey), broth, 3% carrot, 0,5 % rosemary, minerals, pea starch

**Analytical constituents:** crude protein 9.0%, crude fat 3.5%, crude fibres 0.5%, crude ash 2.0%, moisture 82.0%, calcium 0.25%, phosphorus 0.2%, sodium 0.3%

**Brit Care Cat Pouch  
KITTEN. Fillets in Jelly  
with Savory Salmon  
enriched with  
Carrot & Rosemary**



**Composition:**

85% meat in fillets (62% chicken, 15% liver, 8% salmon), broth, 3 % carrot, 0.5 % rosemary, minerals, pea starch

**Analytical constituents:** crude protein 9.0%, crude fat 4.5%, crude fibres 0.5%, crude ash 2.0%, moisture 82.0%, calcium 0.25%, phosphorus 0.2%, sodium 0.3%

**Brit Care Cat Pouch.  
Fillets in Jelly with  
Wholesome Tuna  
enriched with  
Carrot & Rosemary**



**Composition:** fillets with 85% meat (62% chicken, 15% liver, 8% tuna), broth, 3% carrot, 0,5 % rosemary, minerals, pea starch

**Analytical constituents:** crude protein 9.0%, crude fat 3.0%, crude fibres 0.5%, crude ash 2.0%, moisture 82.0%, calcium 0.25%, phosphorus 0.2%, sodium 0.3%.

**Brit Care Cat Pouch  
Fillets in Jelly with  
Fine Trout & Cod  
enriched with  
Carrot & Rosemary**



**Composition:** fillets with 85% meat (62% chicken, 15% liver, 4% trout, 4% cod), broth, 3% carrot, 0,5 % rosemary, minerals, pea starch

**Analytical constituents:** crude protein 8.5%, crude fat 4.0%, crude fibres 0.5%, crude ash 2.0%, moisture 82.0%, calcium 0.25%, phosphorus 0.2%, sodium 0.3%

**Brit Care Cat Pouch  
Fillets in Jelly with  
Tender Turkey  
& Shrimps enriched  
with Carrot & Rosemary**



**Composition:** fillets with 85% meat (62% chicken, 15% liver, 4% turkey, 4% shrimps), broth, 3% carrot, 0,5 % rosemary, minerals, pea starch

**Analytical constituents:** crude protein 8.0%, crude fat 4.0%, crude fibres 0.5%, crude ash 2.0%, moisture 82.0%, calcium 0.25%, phosphorus 0.2%, sodium 0.2%

**Brit Care Cat Pouch  
Fillets in Jelly Choice  
Chicken with Cheese  
enriched with  
Carrot & Rosemary**



**Composition:** fillets with 82% meat (62% chicken, 15% liver), broth, 3% cheese, 3% carrot, 0,5 % rosemary, minerals, pea starch

**Analytical constituents:** crude protein 8.5%, crude fat 4.0%, crude fibres 0.5%, crude ash 2.0%, moisture 82.0%, calcium 0.25%, phosphorus 0.2%, sodium 0.3%

**brit-petfood.com**

1x pouch: NET WEIGHT: 85g, 1 Pallet: 4032 pcs., 1 box = 24 pcs.  
Multipack: NET WEIGHT: 12x85g, 1 Pallet: 308 pcs., 1 box = 1 pc.





# Brit

PREMIUM BY NATURE

THE WAY  
CATS LIKE IT



Delicious smooth meat pâté made with natural ingredients for healthy and happy cats. An aromatic, tasty, and attractive delicacy with no colourants or flavourings.





## TAURIN

proper vital  
function  
performance



### Brit Premium Cat – Wet Food Trout with Liver

**Composition:** 26% trout, 20% liver, 15% chicken hearts, 2% pea flour, 1% lignocellulose

**Analytical constituents:** crude protein 12.0 %, crude fat 3.5 %, crude ash 1.5 %, moisture 78.0 %, crude fibers 0.5 %, calcium 0.4 %, phosphorus 0.3 %, sodium 0.25 %

#### Brit Premium Cat – Wet Food Chicken with Beef



**Composition:**  
28 % chicken, 17 % beef,  
liver, 2% pea flour,  
1% lignocellulose

**Analytical constituents:**

crude protein 12.0 %,  
crude fat 3.0 %, crude  
ash 2.5 %, moisture  
78.0 %, crude fibers  
0.5 %, calcium 0.4 %,  
phosphorus 0.3 %,   
sodium 0.2 %

#### Brit Premium Cat – Wet Food Chicken with Hearts



**Composition:**  
33% chicken, 8 % hearts,  
organs, 2% pea flour,  
1% lignocellulose.

**Analytical constituents:**

crude protein 12.0 %,  
crude, fat 3.0 %, crude  
ash 2.0 %, moisture  
78.0 %, crude fibers  
0.5 %, calcium 0.4 %,  
phosphorus 0.3 %,   
sodium 0.2 %

#### Brit Premium Cat – Wet Food Turkey with Lamb



**Composition:**  
26% turkey, 15 % lamb,  
liver, 2% pea flour,  
1% lignocellulose.

**Analytical constituents:**

crude protein 11.0 %,  
crude fat 4.5 %, crude  
ash 1.5 %, moisture  
78.0 %, crude fibers  
0.5 %, calcium 0.4 %,  
phosphorus 0.3 %,   
sodium 0.2 %

#### Brit Premium Cat – Wet Food Chicken with Rice



**Composition:**  
41% chicken, liver, 4%  
rice, 2% pea flour, 1%  
lignocellulose

**Analytical constituents:**

crude protein 11.0 %,  
crude fat 4.0 %, crude  
ash 2.0 %, moisture  
78.0 %, crude fibers  
0.5 %, calcium 0.4 %,  
phosphorus 0.3 %,   
sodium 0.2 %

#### Brit Premium Cat – Wet Food Turkey with Liver



**Composition:**  
26% turkey, 20% liver,  
organs, 2% pea flour,  
1% lignocellulose

**Analytical constituents:**

crude protein 11.0 %,  
crude fat 5.0 %, crude  
ash 2.0 %, moisture  
78.0 %, crude fibers  
0.5 %, calcium 0.4 %,  
phosphorus 0.3 %,   
sodium 0.45 %

**NET WEIGHT: 200g, 1 Pallet: 2250 pcs., 1 box = 6 pcs.**

**[brit-petfood.com](http://brit-petfood.com)**





# Brit

PREMIUM BY NATURE

Sausage at first bite.



## 95% MEAT WITH ORGANS

Cats prefer meat and require a diverse diet. Their warm welcome deserves a special food that can please even the choosiest of feline eaters. The high content of meat and organs provides irresistible flavour and excellent digestibility. It's sure to entice cats of all breeds and ages.



[brit-petfood.com](http://brit-petfood.com)





# Brit

PREMIUM BY NATURE

## 95% CHICKEN & DUCK



### COMPOSITION:

65% CHICKEN (MEAT, LIVER, HEARTS, NECKS, STOMACHS), 35 % DUCK (MEAT, LIVER, HEARTS, TRIPE), 3.5 % PEAS, 1% BROTH, 0.5 % SALMON OIL.



## 95% CHICKEN & RABBIT

### COMPOSITION:

65% CHICKEN (MEAT, LIVER, HEARTS, NECKS, STOMACHS), 30% RABBIT (MEAT, LIVER, HEARTS), 3.6 % PEAS, 0.9% BROTH, 0.5% SALMON OIL.



## 95% CHICKEN & TURKEY STERILIZED

### COMPOSITION:

58% CHICKEN (MEAT, LIVER, HEARTS, NECKS, STOMACHS), 37% TURKEY (MEAT, HEARTS, LIVER), 3.1% PEAS, 0.9% BROTH, 0.5% SODIUM CHLORIDE, 0.5 % SALMON OIL.

**NET WEIGHT:** 180 g. **I PALLET** = 2268 pcs. **I BOX** = 27 pcs.













vafo.com